



Features and Benefits

Sophisticated practicality.

Acacia Hill expertly blends the practical benefits you expect from nylon with discerning aesthetic qualities traditionally only associated with natural fibres.

Rich, organic texture.

Acacia Hill is not only beautiful, but outstandingly effective at concealing soiling.

Luxurious underfoot.

Acacia Hill's large, tufted-loop pile feels delightful to touch, yet is rated 'extra heavy duty' for residential use, and 'medium duty' for commercial.

Modern style.

With chicly heathered colours, and geometric patterns, Acacia Hill provides an ideal foundation for contemporary interiors.

Australian quality.

Designed and manufactured in Australia, Acacia Hill is colourfast, stain resistant, anti-static and fire retardant.

Acacia Hill | Specifications

| | |
|--------------------------------|---|
| Description | Textured Tufted Loop Pile |
| Pile Content | 100% BCF Solution Dyed Nylon |
| Gauge | 3/16th |
| Pile Height | High 5.5mm ± 1mm Low 4.5mm ± 1mm |
| Total Product Thickness | 8.0mm ± 1mm |
| Width | 366cm |
| Primary Backing | Woven polypropylene |
| Secondary Backing | Blue Stripe Synthetic backing |
| Flammability | Fire Rated Carpet. Please contact our Customer Care for more information. |
| ACCS Rating | |
| Residential | Extra Heavy Duty (5*) |
| Contract | Medium Duty (2*) |
| Variation | Specifications subject to ± 5% variation |
| Dye Batch Variation | Colour variation may occur from batch to batch |
| Guarantees | |
| *Conditions apply | 15 year Residential Wear* 15 year Colourfast* |
| Pattern Repeat | Width 10mm Length 10mm |
| Environmental | Quality Assured to ISO 9001 & Environmental Management System 14001. |



Australian Made



Durability



Easy to Care



Pet Friendly



Track Resistant

Solid shade carpets may exhibit colour streaking. Tufting of this carpet may incur **shift lines** across the width of the carpet. This is not a manufacturing fault and will not affect the performance of this carpet. **Dye batch colour variations** may occur from batch to batch. **Patterned carpets** with directional designs may be subject to pattern distortion. Exact pattern match cannot be guaranteed.

Our goods come with guarantees that cannot be excluded under the Australian Consumer Law. You are entitled to a replacement or refund for a major failure and compensation for any other reasonably foreseeable loss or damage. You are also entitled to have the goods repaired or replaced if the goods fail to be of acceptable quality and the failure does not amount to a major failure. **VERSION | 23.01.24**



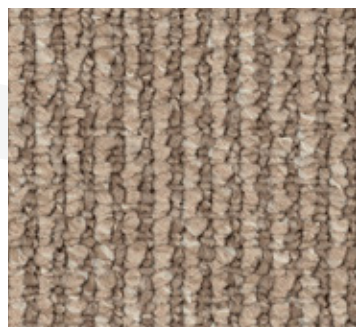
FOR MORE INFORMATION
SCAN QR CODE



Alton 1249



Kennedy 1250



Atkins 1253



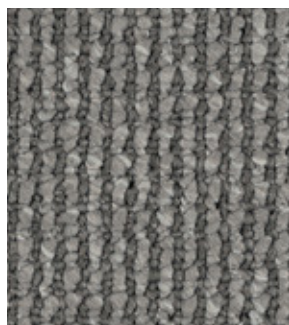
Mawson 1251



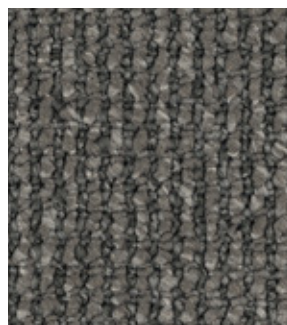
Millrose 1255



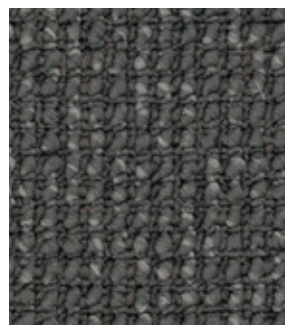
Longford 1252



Karson 1254



Myrtle 1256



Magnolia 1248